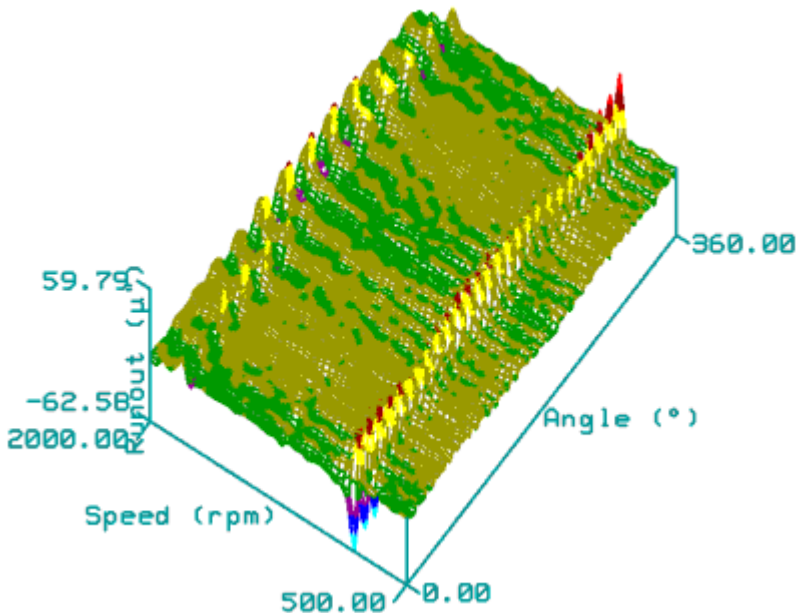


Disk Resonance Test Option

This option for THôT disk testers provides the capability to view disk resonance and flutter characteristics of the disk structure. This data increases the understanding of how the disk surface reacts and how read-write heads can manage to withstand vibrations as the disk is accelerating and decelerating.



Oscillation frequencies at certain rotational speeds can cause structural fatigue or head/disk impact resulting in apparently random thermal asperities and loss of data. Measurement of violent resonance bursts at head takeoff & landing speeds as well as sustained resonance that may excite suspensions or support mechanisms are possible to detect in this dynamic test environment.

Features:

- RPM versus surface distortion analysis.
- User selectable starting speed, ending speed, speed increment, data acquisition rate and test radius.
- User selectable data acquisition digital filtering.
- Display parameters include user selectable features to select runout, velocity or acceleration plots and feature extraction with the proven THôT Technologies “Modulation Removal” technique.
- Displays include 3-D rectilinear plots and individual revolution linear traces.
- Up to nine display windows open for viewing at a time.

Note: This option requires RVA test capabilities. Option is not offered on wafer scanners.



THôT Technologies, Inc

271 East Hacienda Avenue, Campbell, California 95008-6616
Tel: (408) 370-4600 / Fax: (408) 370-4609 / www.thot-tech.com