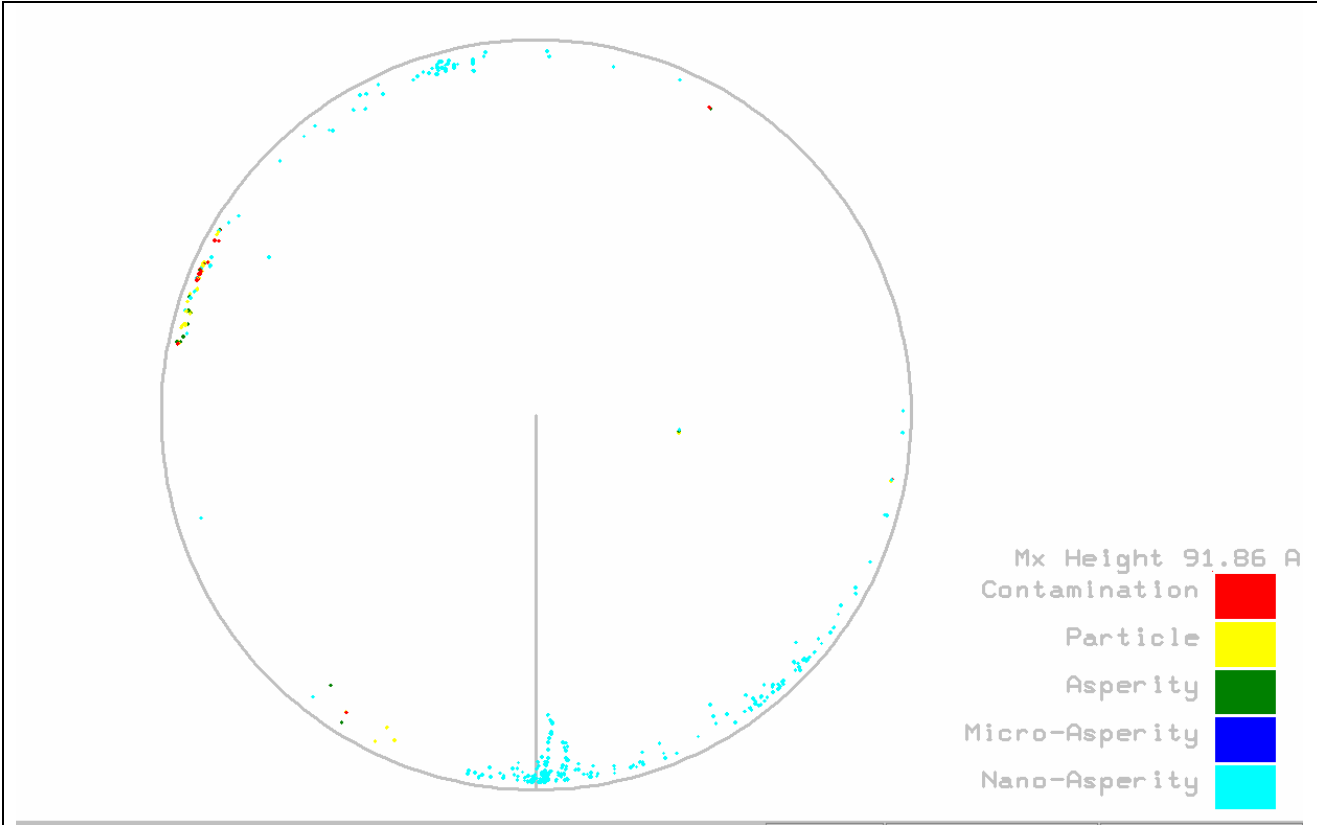


Disk Rotation and Defect Repeatability

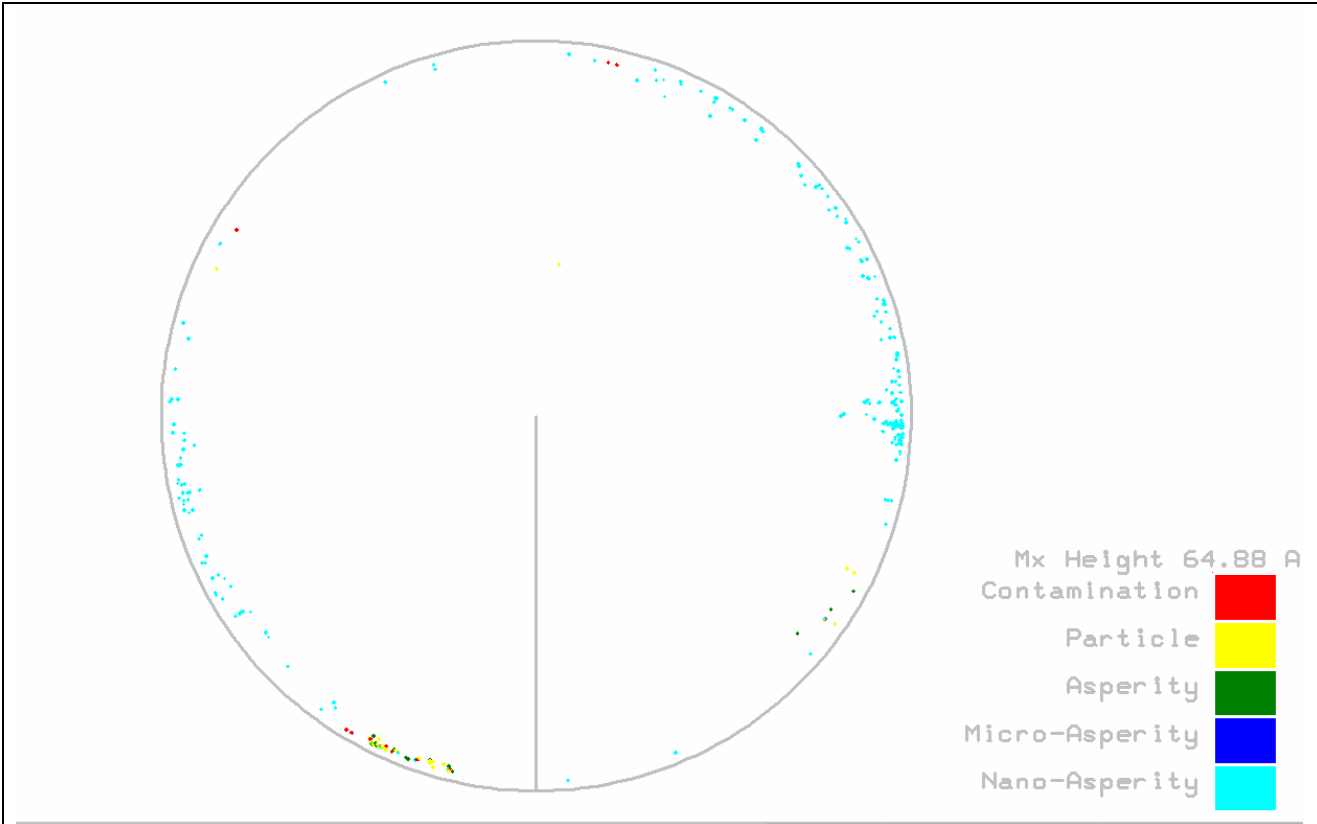
Two disks were tested. One was tested for nano-asperities and the other for nano-pits.

The disks were tested then rotated 90 degrees on spindle and tested again. This was repeated at the 180 degree and 270 degree rotation points on the spindle.

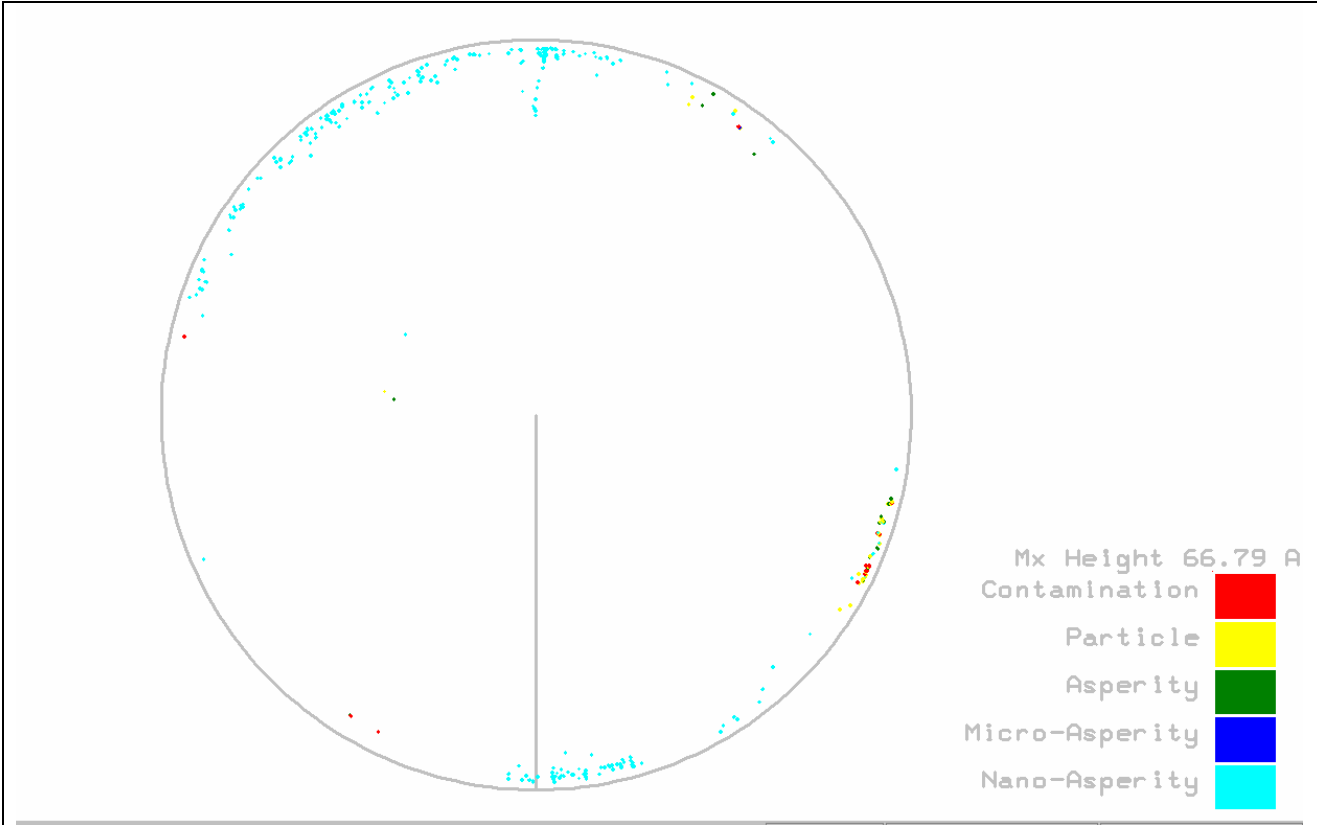
The polar plots demonstrate that the tool has excellent repeatability.



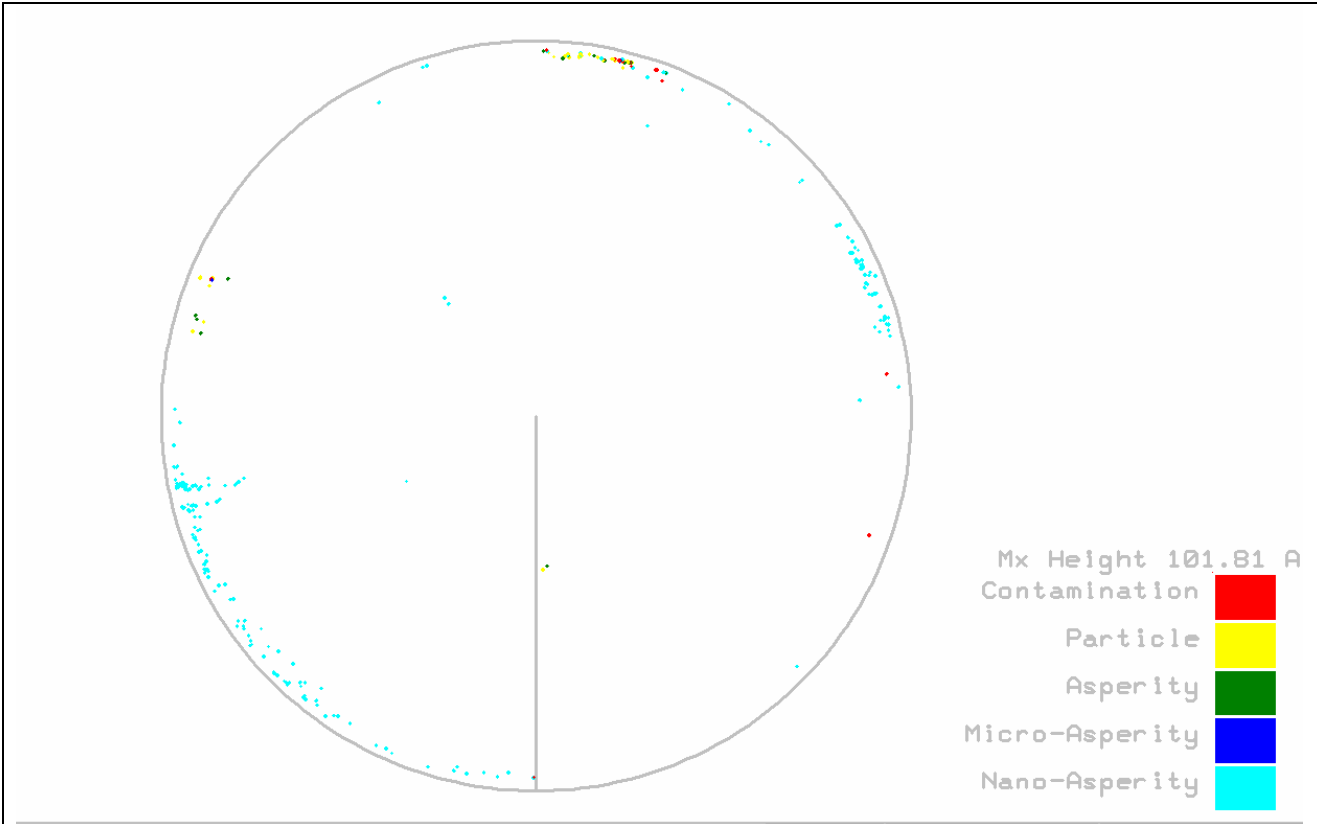
Nano-Scan Asperities, Rotation Angle = 0 Degrees



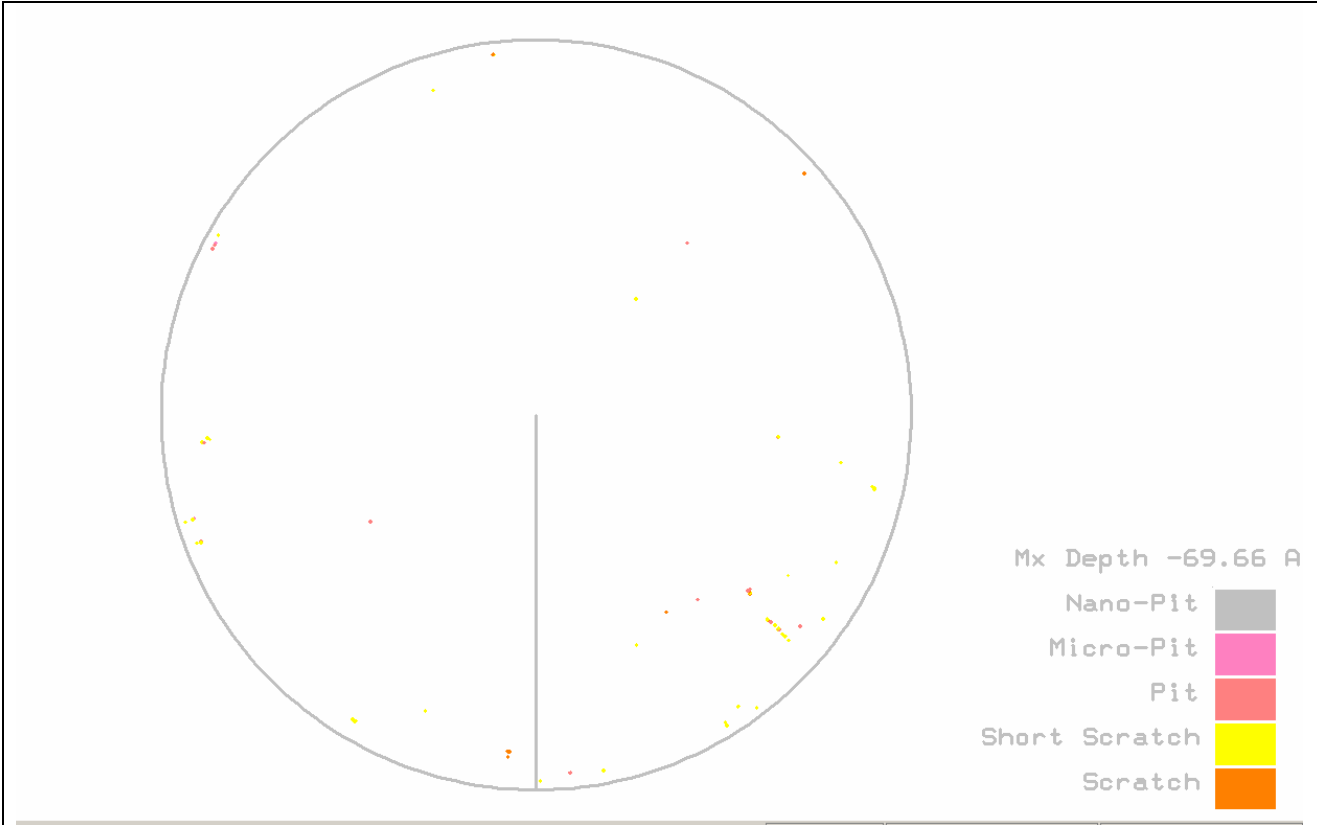
Nano-Scan Asperities, Rotation Angle = 90 Degrees



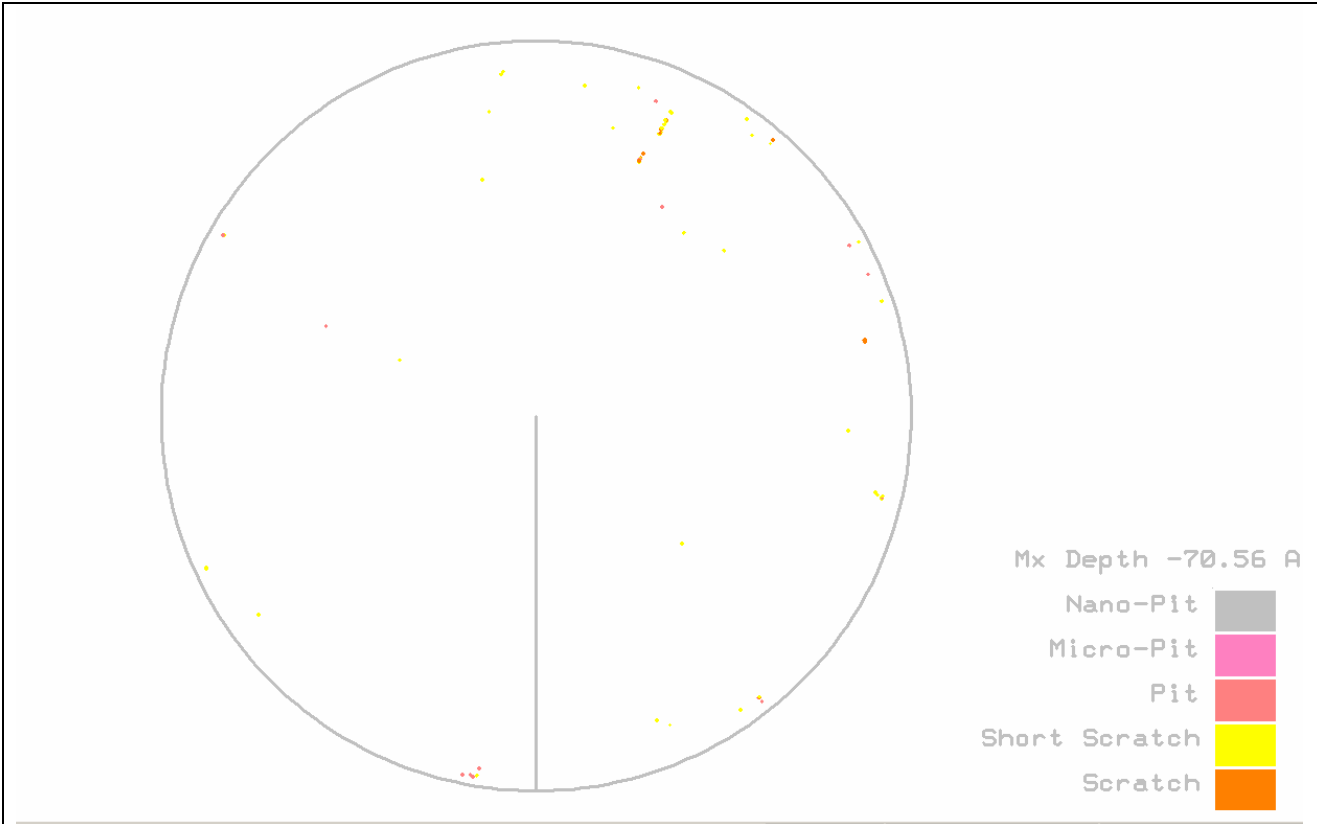
Nano-Scan Asperities, Rotation Angle = 180 Degrees



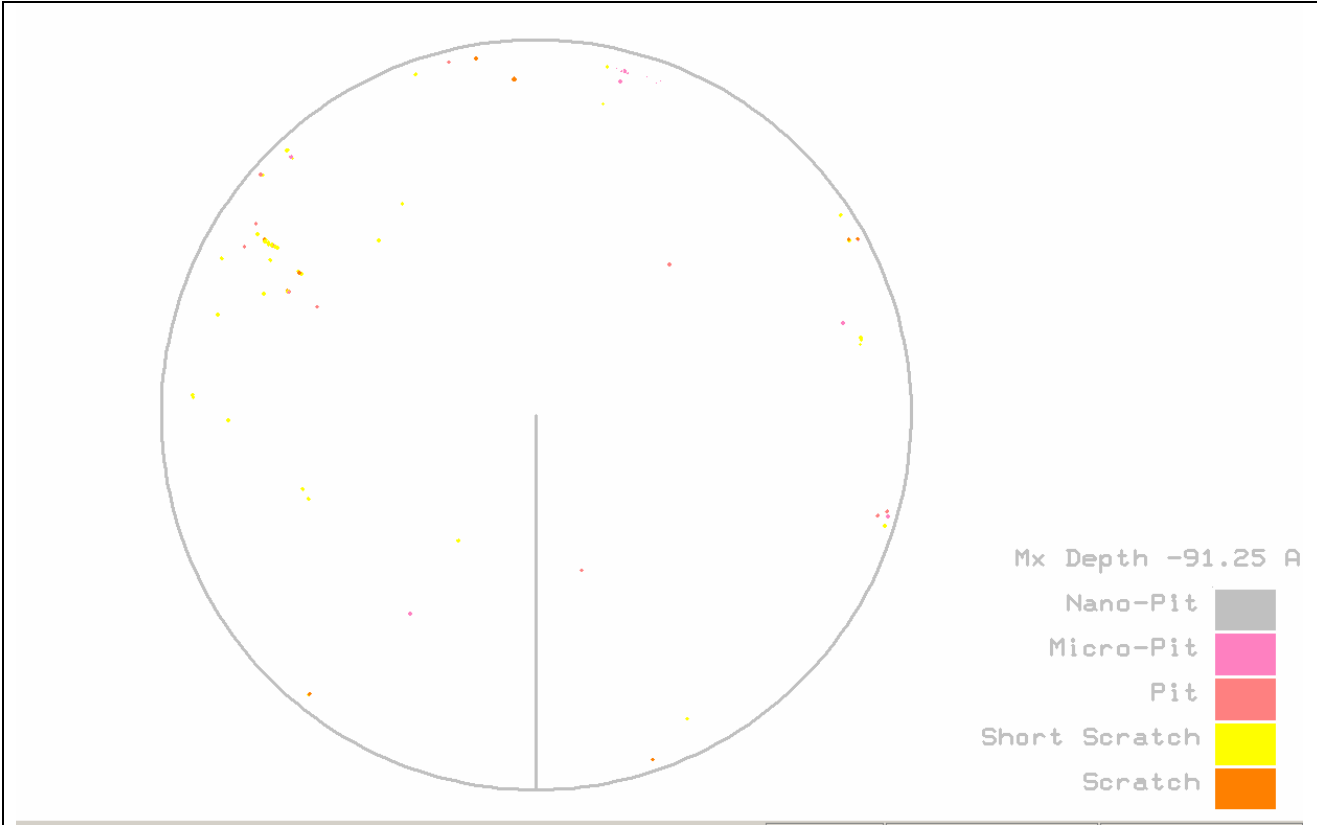
Nano-Scan Asperities, Rotation Angle = 270 Degrees



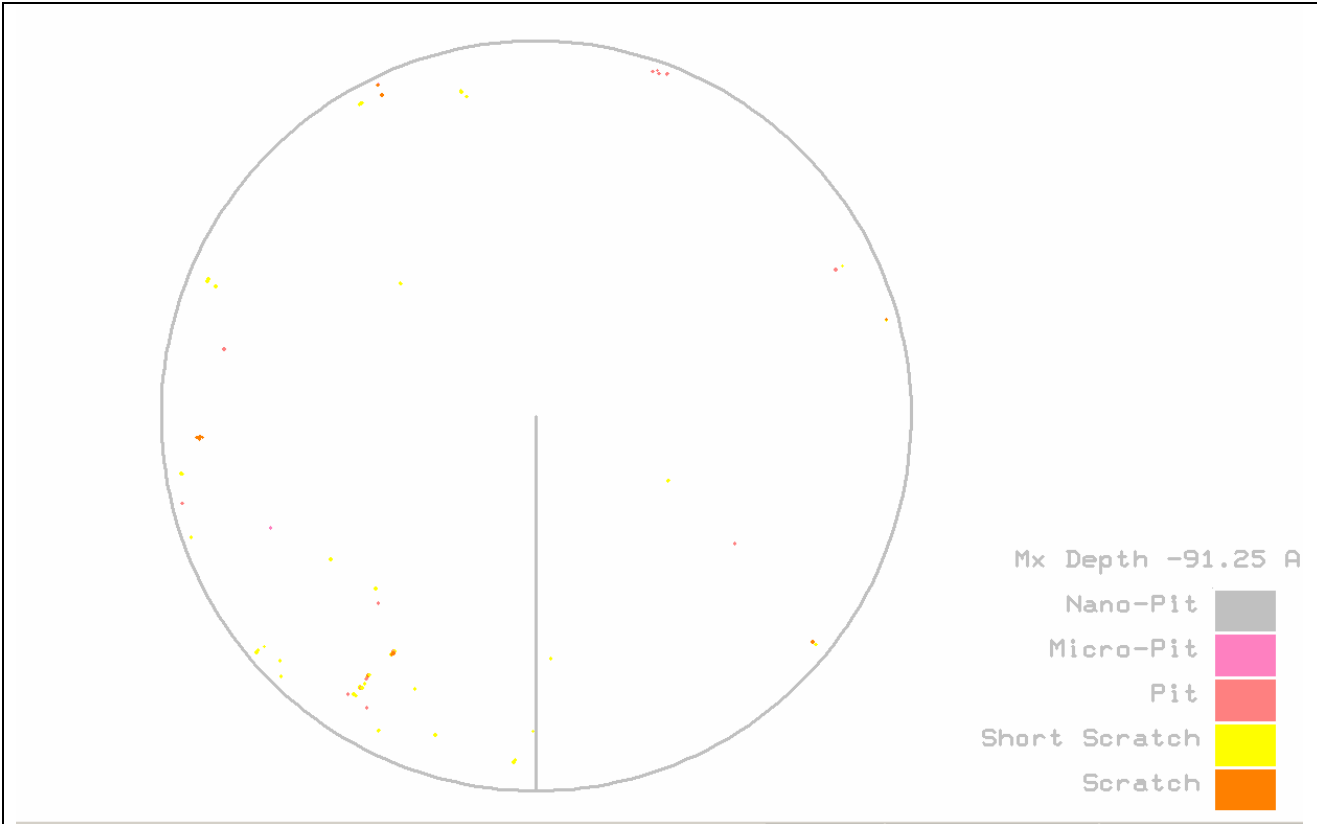
Nano-Scan Pits (Nano-Pits Off), Rotation Angle = 0 Degrees



Nano-Scan Pits (Nano-Pits Off), Rotation Angle = 90 Degrees



Nano-Scan Pits (Nano-Pits Off), Rotation Angle = 180 Degrees



Nano-Scan Pits (Nano-Pits Off), Rotation Angle = 270 Degrees