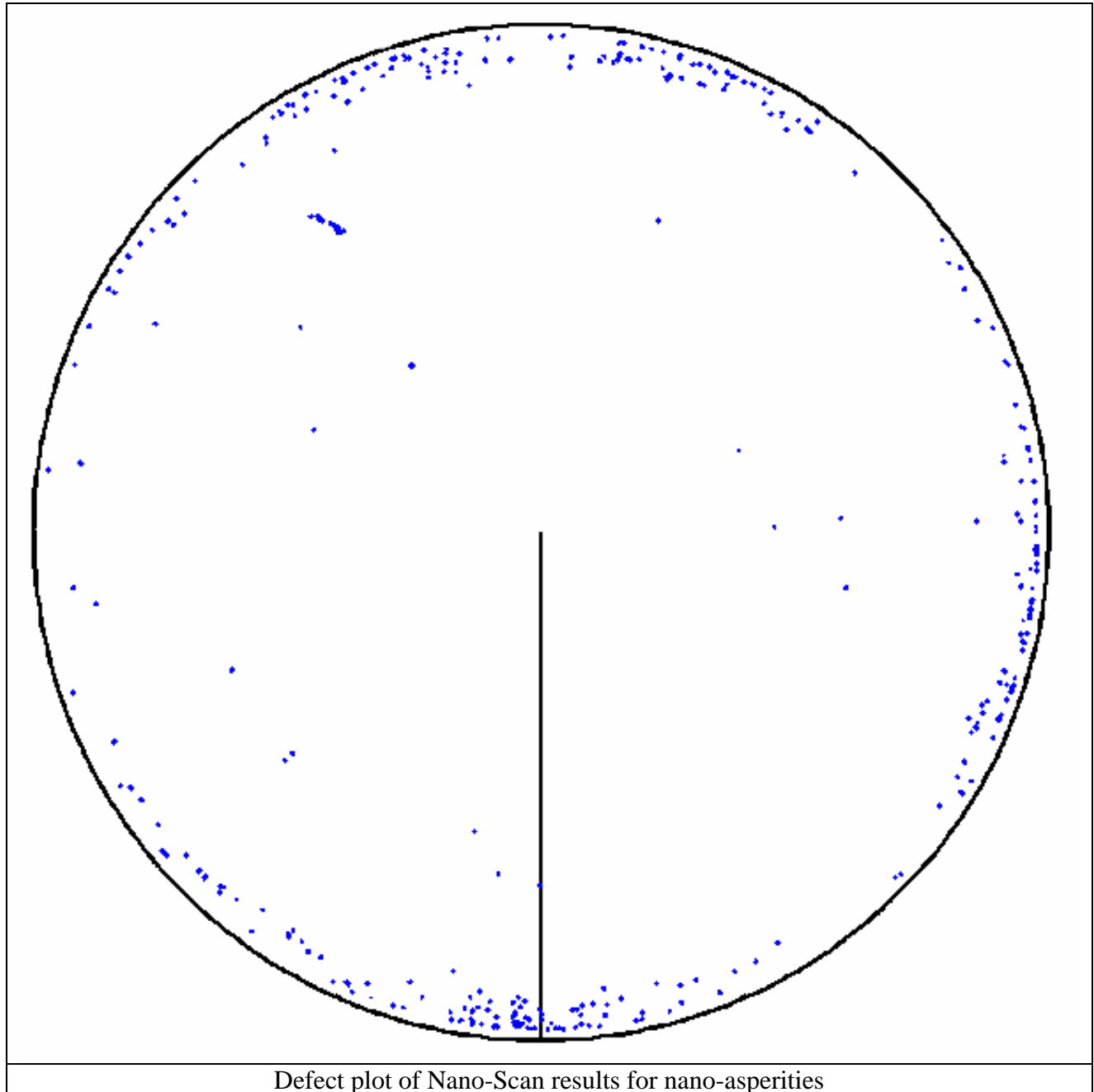


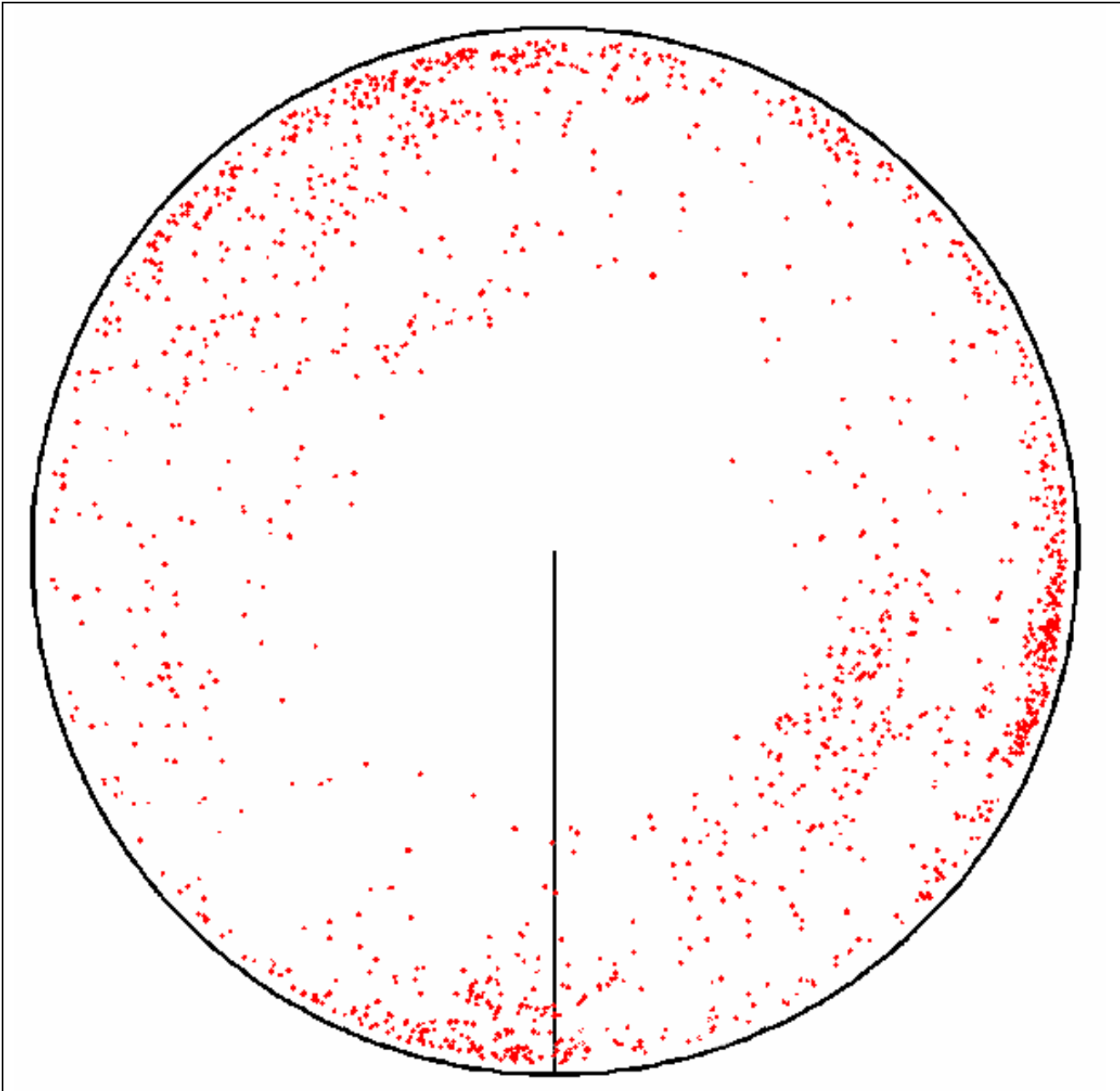
### Defect Separation by Height and Depth

The following is a graphic example of the ability of the THoT Nano-Scan tool to separate height and depth.

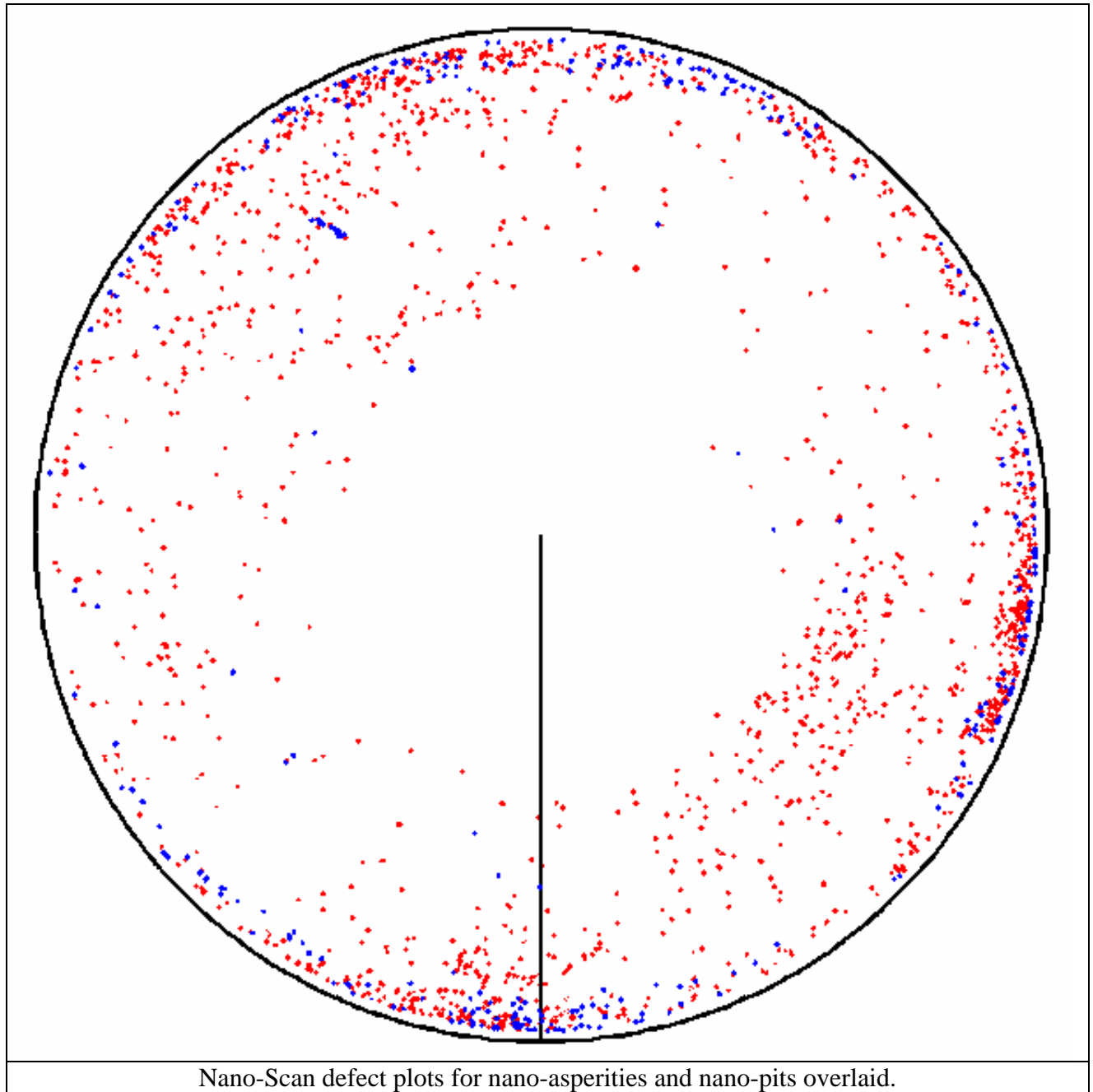
Nano-Scan tests for nano-asperities and nano-pits have been run on the same disk surface. The tests were executed simultaneously.

The individual results are shown below.





Defect plot of Nano-Scan results for nano-pits



It is obvious from the above that the THoT Nano-Scan can easily separate height and depth.